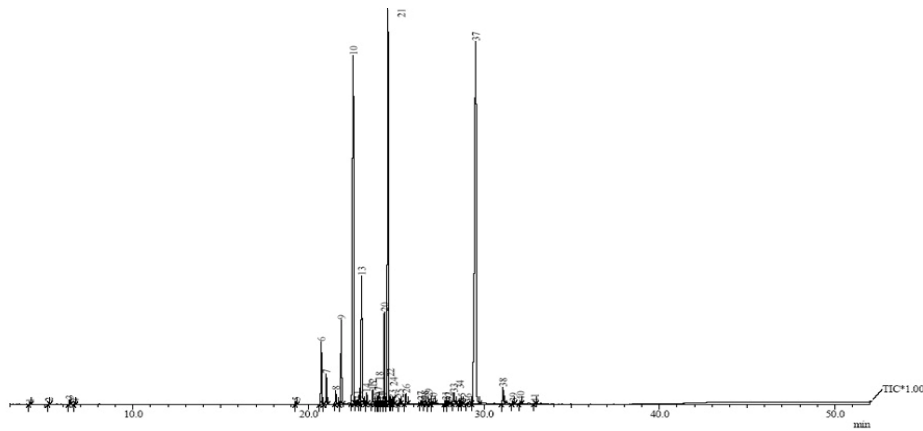


## TECHNICAL INFORMATIONS (SPEC/COA/GC)

<b>Product Name</b>	: Patchouli	<b>RESULT</b>
<b>Botanical Name</b>	: Pogostemon cablin	
<b>Description</b>	: Clear dark brown mobile liquid	<b><u>COMPLIES</u></b>
<b>Specific Gravity (20° C)</b>	: 0.9430 – 0.9830	
<b>Refractive Index (20° C)</b>	: 1.5000 – 1.5150	
<b>Optical Rotation</b>	: -66° – -47°	
<b>Shelf Life</b>	: 24 Months	

### MAIN CONSTITUENTS - GC Analysis

1. Patchoulol	31.97%	6. $\beta$ -Patchoulene	2.49%
2. $\alpha$ -Guaiene	21.16%	7. $\beta$ -Elemene	1.18%
3. $\delta$ -Guaiene	18.41%	8. Caryophyllene oxide	0.20%
4. $\alpha$ -Patchoulene	8.43%	9. $\beta$ -Pinene	0.16%
5. $\beta$ -Caryophyllene	3.33%	10. $\alpha$ -Pinene	0.07%



This information is obtained from current and reliable sources.  
We provide the information herein without any warranty expressed or implied.  
Customers are advised to determine in advance the safe conditions for use of this product.

As it is electronically generated document, hence no signature required.