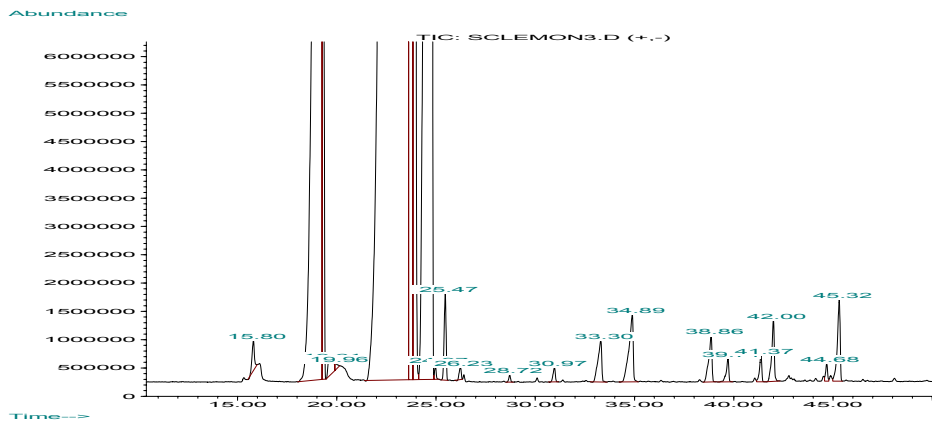


## TECHNICAL INFORMATIONS (SPEC/COA/GC)

|                                 |   |                        |
|---------------------------------|---|------------------------|
| <b>Product Name</b>             | : Lemon                                 | <b>RESULT</b>          |
| <b>Botanical Name</b>           | : Citrus limon                          |                        |
| <b>Description</b>              | : Pale to greenish yellow clear liquid. | <b><u>COMPLIES</u></b> |
| <b>Specific Gravity (20° C)</b> | : 0.8500 - 0.8580                       | <b><u>0.8523</u></b>   |
| <b>Refractive Index (20° C)</b> | : 1.4730 - 1.4760                       | <b><u>1.4749</u></b>   |
| <b>Optical Rotation</b>         | : +57° TO +65.6°                        | <b><u>+ 65.5°</u></b>  |
| <b>Shelf Life</b>               | : 18 Months                             |                        |

### MAIN CONSTITUENTS - GC Analysis

|                        |        |                   |       |
|------------------------|--------|-------------------|-------|
| 1. Limonene            | 68.89% | 6. Myrcene        | 1.40% |
| 2. $\beta$ -Pinene     | 11.35% | 7. Geranial       | 0.96% |
| 3. $\gamma$ -Terpinene | 8.10%  | 8. Bisabolene     | 0.62% |
| 4. Sabinene            | 1.90%  | 9. Neral          | 0.59% |
| 5. $\alpha$ -Pinene    | 1.68%  | 10. Neryl acetate | 0.43% |



This information is obtained from current and reliable sources.  
We provide the information herein without any warranty expressed or implied.  
Customers are advised to determine in advance the safe conditions for use of this product.

As it is electronically generated document, hence no signature required.