

## TECHNICAL INFORMATIONS (SPEC/COA/GC)

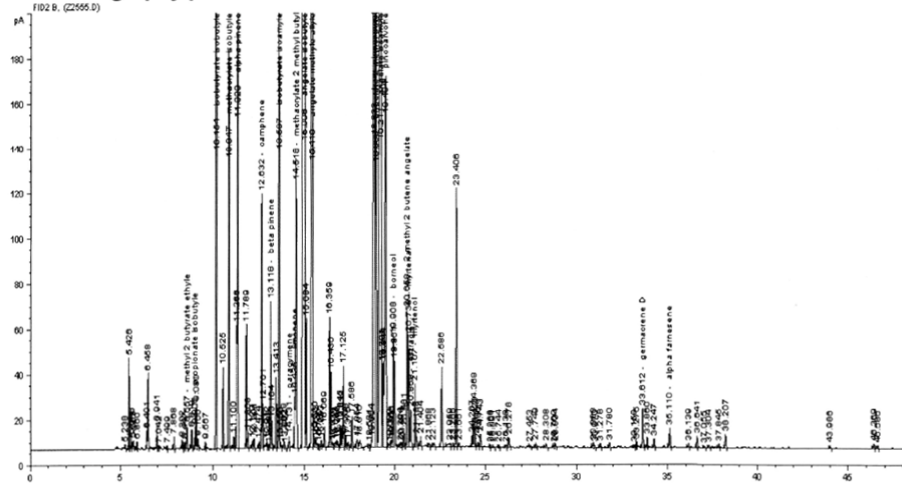
<b>Product Name</b>	:	Roman Chamomile	<b>RESULT</b>
<b>Botanical Name</b>	:	Chamaemelum nobile	
<b>Description</b>	:	Light blue or pale green-yellow with ages.	<b><u>COMPLIES</u></b>
<b>Specific Gravity (25° C)</b>	:	0.9000 - 0.9200	<b><u>0.9117</u></b>
<b>Refractive Index (20° C)</b>	:	1.4380 - 1.4460	<b><u>1.4448</u></b>
<b>Shelf Life</b>	:	24 Months	

### MAIN CONSTITUENTS - GC Analysis

1. Isobutyle angelate	29.92%	6. 2-Methylbutyl angelate	4.09%
2. Isoamyle angelate	14.53%	7. Pinocarpone	3.79%
3. Methyl allyle angelate	8.70%	8. Isoamyle isobutyrate	3.01%
4. Trans-pinocarveol	6.17%	9. α-Pinene	2.24%
5. Isobutyle isobutyrate	5.25%	10. Isobutyle methacrylate	1.84%

**Instrument** : GC 6890 MS 5973  
**Column** : DB1 60m \* 0.25mm \* 0.25µm  
**Carrier gas** : Helium  
**Oven** : 70°C – 3°C/min – 250°C for 20 min.

### Chromatography profil



TR FID	Compound	% GC FID
8.557	methyl 2 butyrate ethyle	0,12
9.005	propionate isobutyle	0,09
10.154	isobutyrate isobutyle	5,25
10.847	methacrylate isobutyle	1,84
11.323	alpha pinene	2,24
12.632	camphene	1,29
13.118	beta pinene	0,76
13.587	isobutyrate isoamyle	3,01
14.131	paracymene	0,07
14.435	limonene	0,30
14.518	methacrylate 2 methyl butyl	1,95
15.006	angelate isobutyle	29,92
15.419	angelate methyl allyle	8,70
18.833	trans pinocarveol	6,17
18.939	angelate-2-methyl butyle	4,09
19.211	angelate isoamyle	14,53
19.484	pinocarvone	3,79
19.908	borneol	1,12
20.658	2 methyl 2 butene angelate	0,81
20.738	myrtenal	0,66
20.858	estragole	0,33
21.107	myrtenol	0,37
	eugenol	Tr
	methyl eugenol	Tr
33.612	germacrene D	0,25
35.110	alpha farnesene	0,14
	benzyl benzoate	Tr
	<b>total</b>	<b>87,80</b>

This information is obtained from current and reliable sources.  
We provide the information herein without any warranty expressed or implied.  
Customers are advised to determine in advance the safe conditions for use of this product.

As it is electronically generated document, hence no signature required.